

Investigation of corrosion level on weathering steel using hyperspectral imaging

Yamaguchi University / Department of Construction and Environment Eng.

Assistant Prof. **Rina HASUIKE**

(email: hasuike@yamaguchi-u.ac.jp)

PhD Candidate **Ryuichi INOUE**

Professor **Toshihiko ASO**

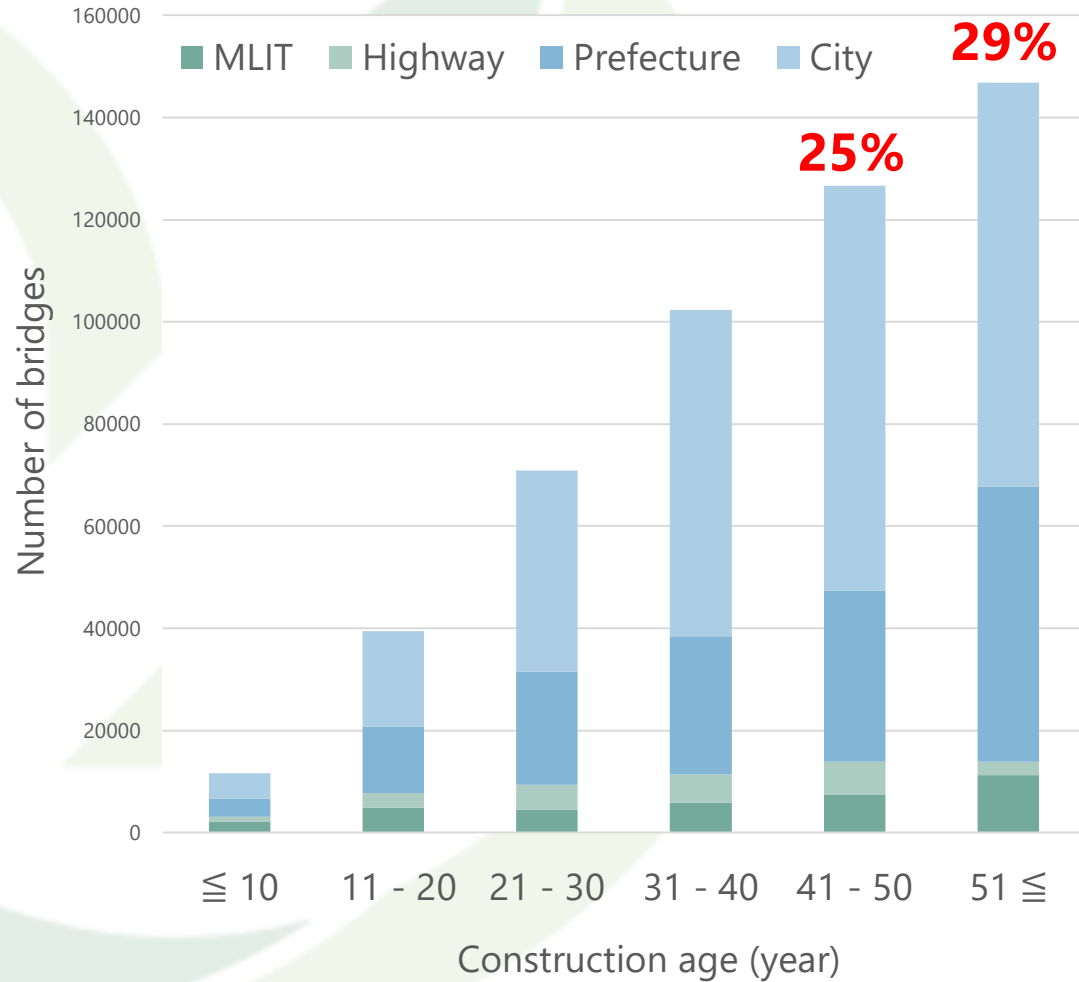
RMIT University / Department of Civil and Infrastructure Eng.

Senior Lecturer **Lei HOU**

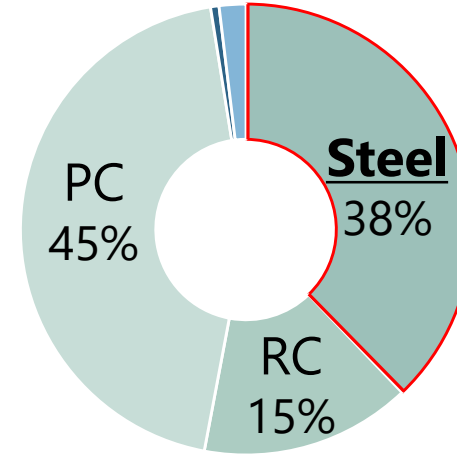
Introduction



Introduction



Materials of bridges (superstructure)



FATIGUE



CORROSION



Mild steel + Paint



Weathering steel

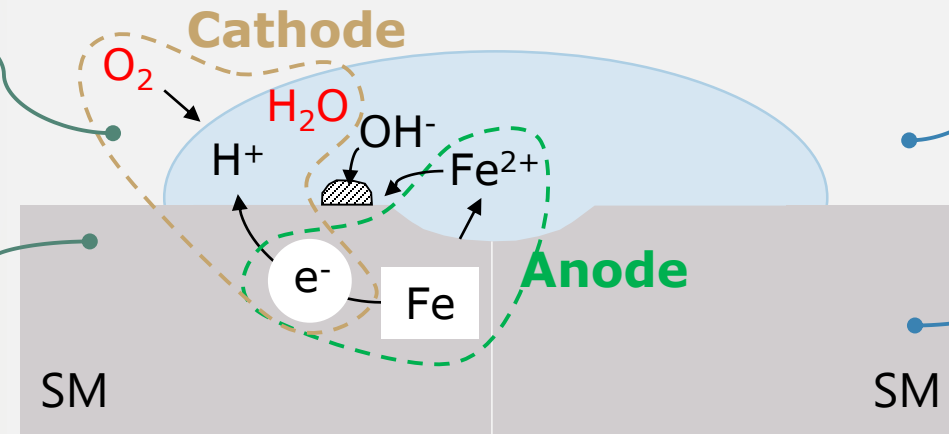
Corrosion Deterioration

PREVENTION

Removing H_2O/O_2 from steel surface

Painting steel surface

Using high corrosion resistance material



MAINTENANCE

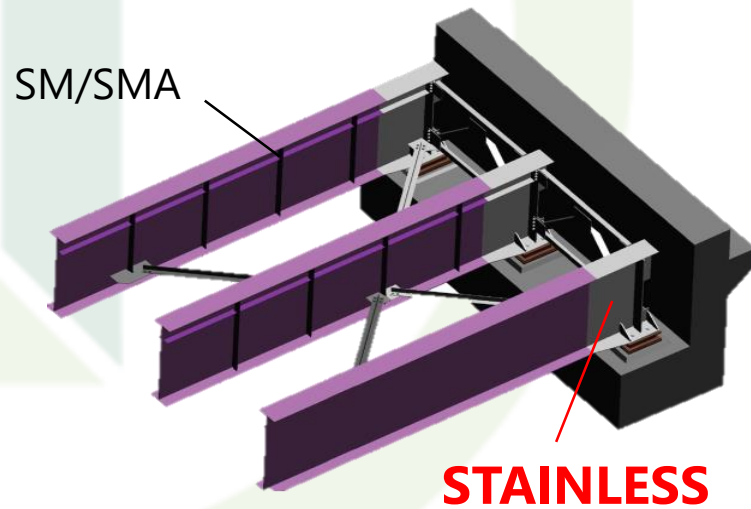
Detecting and monitoring H_2O/O_2

Classifying corrosion level

Repairing

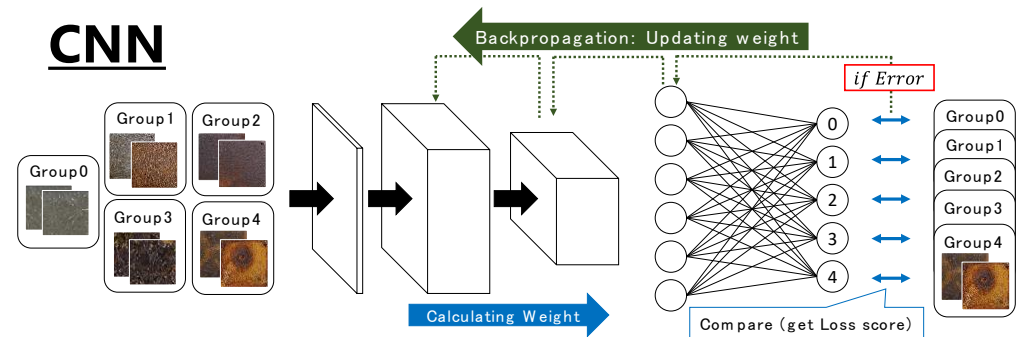
High corrosion resistance material

Combine Stainless steel (SUS)
& Mild steel (SM/SMA)

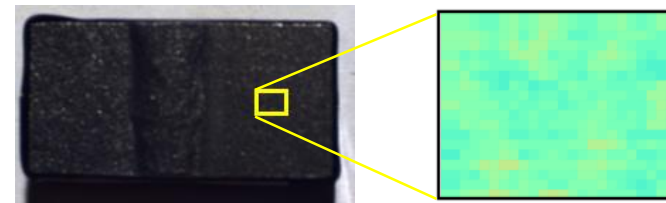


Simple maintenance/monitoring

Classifier based on Images



Hyper Spectrum



GOAL

Proposing **simple monitoring methods** for steel bridges

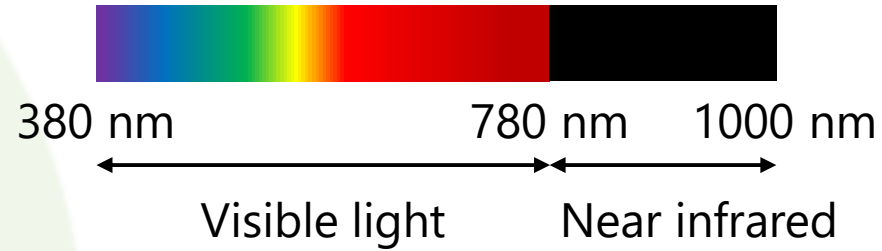
OBJECTIVES

- 01 | To confirm the ability of **Hyper Spectral Camera (HSC)** for steel bridge
 - Requirements to obtain hyper spectrum
- 02 | To clarify the relationship between hyper spectrum (HS) and corrosion level
 - Comparing HS with Rust thickness/elements on the surface

01 Hyper Spectral Camera (HSC)

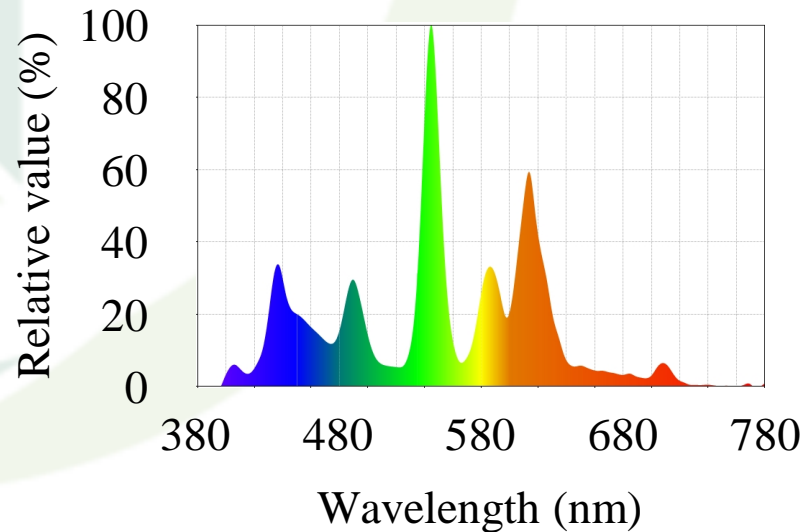


Photos : DHT Corporation

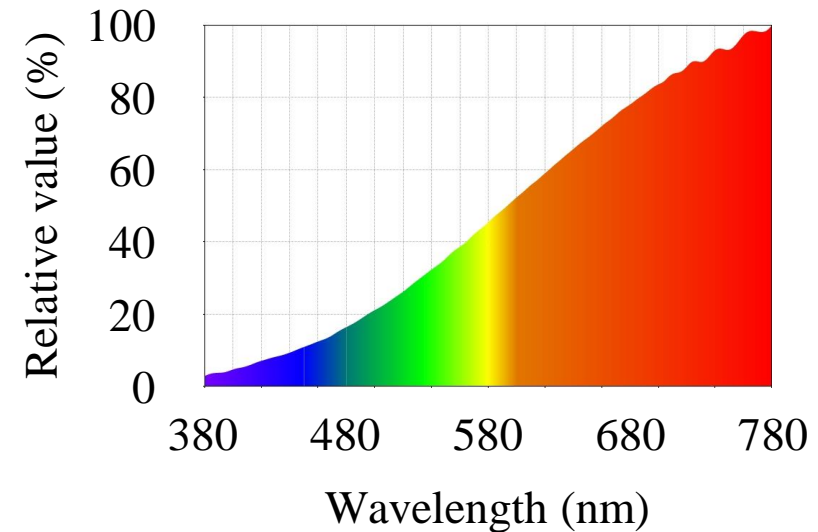


Wavelength resolution (nm)	7
Spectrum Bands	204
Working distance	150 - ∞ mm

Fluorescent Light



Halogen Light



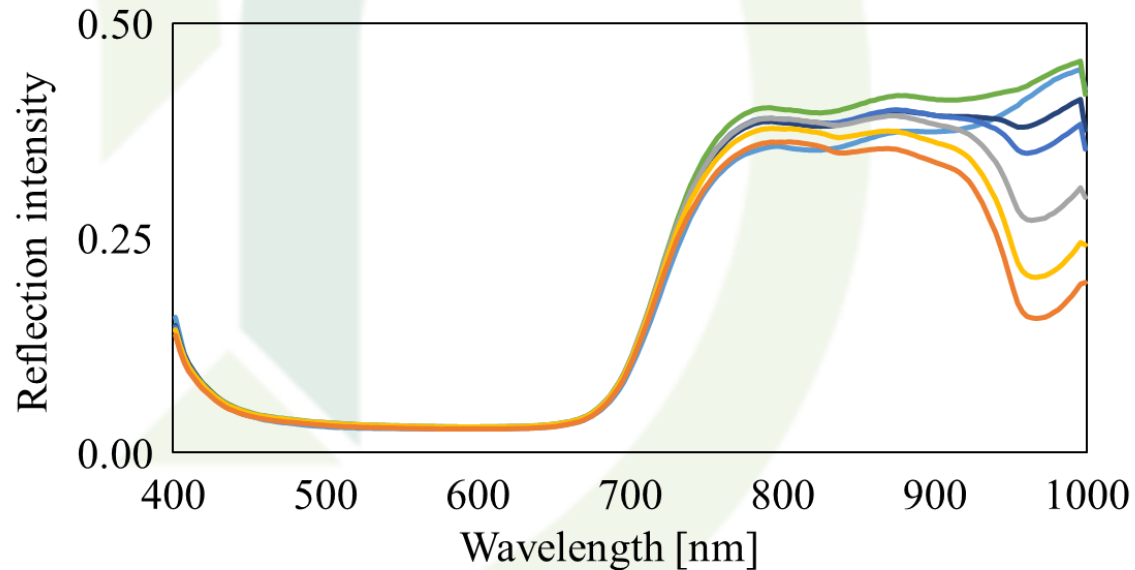
01 Obtaining Hyper Spectrum



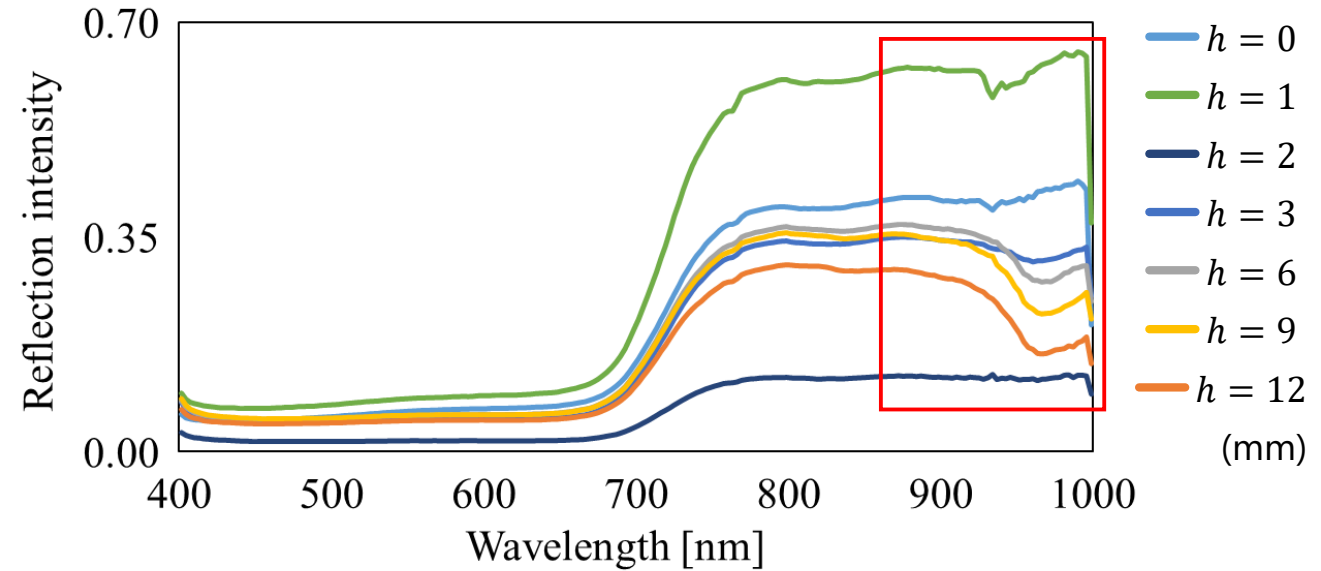
01 Obtaining Hyper Spectrum

e.g. Hyper Spectrum : different depth of water

WITH Halogen Light

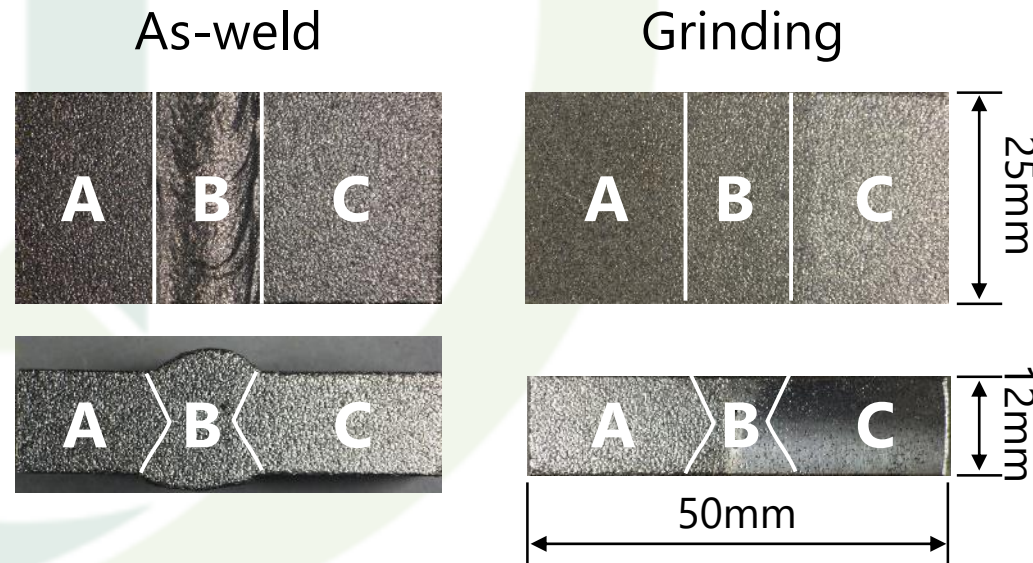


WITHOUT Halogen Light (Sun Light)



02 Hyper spectrum and Corrosion

- (1) Conducting corrosion test for the welded specimens (SUS-SM)
- (2) Obtaining HS, Surface appearance, Rust thickness and Elements distribution



A	B (Welding)	C
SUS304	GFW309	SM400
SUS821L	GFW309	SM490
SM400	YM55C	SM400

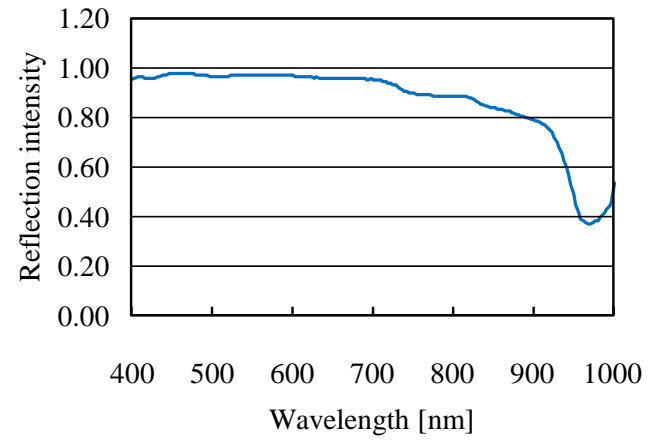
02 HS and Corrosion

Surface & Rust thickness



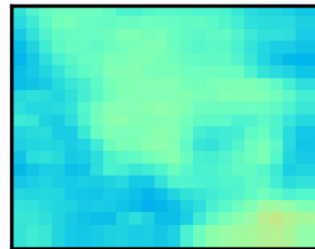
* elecometer

Hyper spectrum

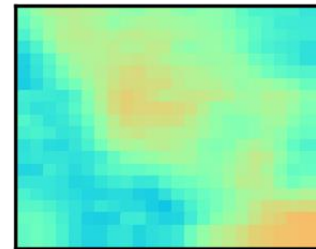


Hyperspectral imaging

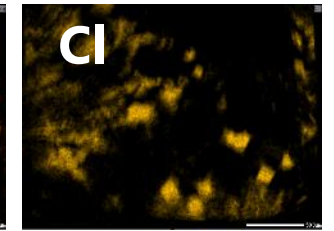
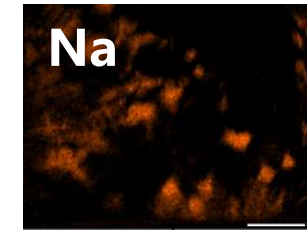
52 band



104 band

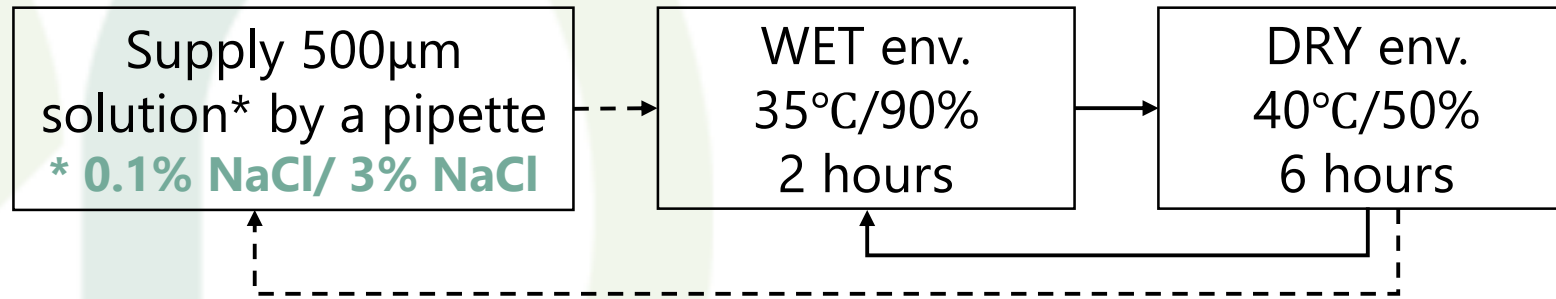


Elements map



02 Corrosion Acceleration Test

TEST CYCLE



Supplying once per several cycles

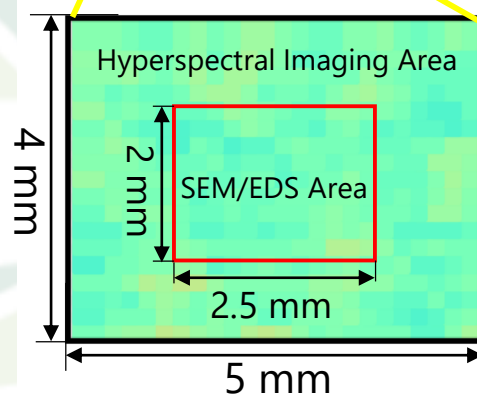
0 to 24 cycles: once per 3 cycles
25 to 48 cycles: once per 12 cycles
after 49 cycles: no supplying



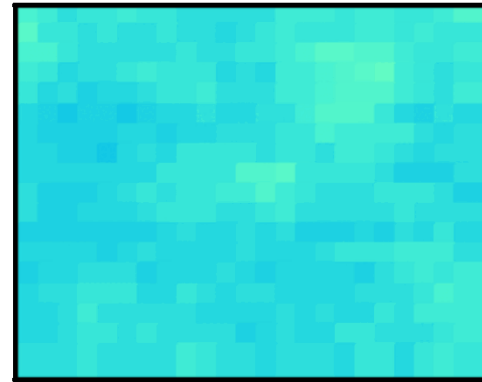
Temperature & humidity chamber

02 Hyper Spectrum

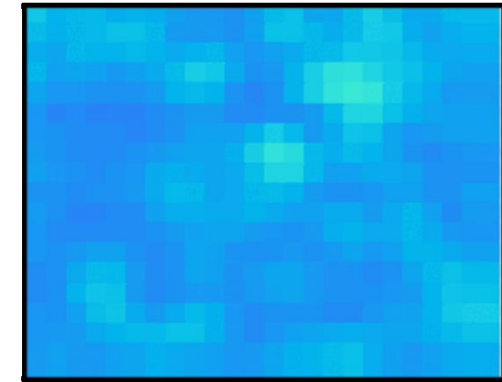
Surface appearance : 0 to 15 cycles



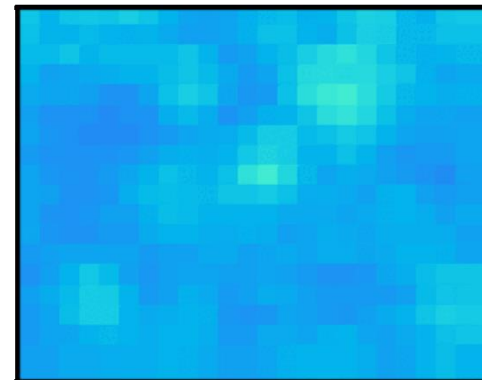
14 band (Blue)



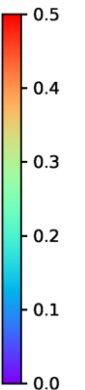
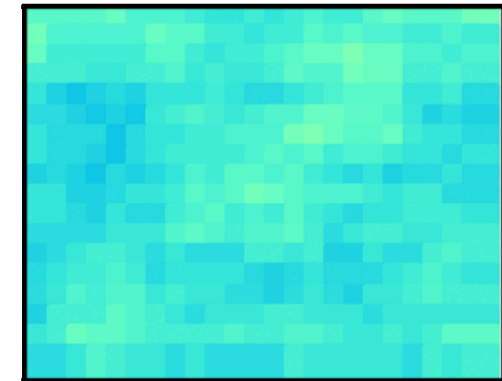
52 band (Green)



104 band (Red)



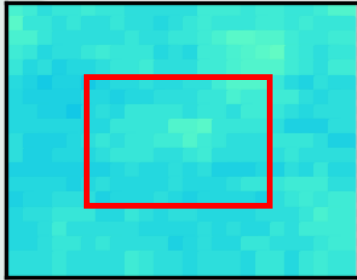
190 band (Near Infrared)



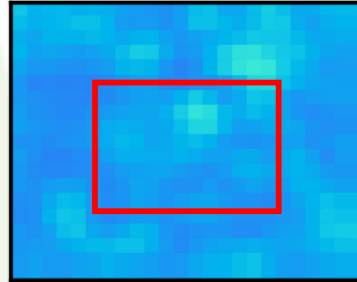
02 HS and Elements

0 cycle : SM (0.1% NaCl)

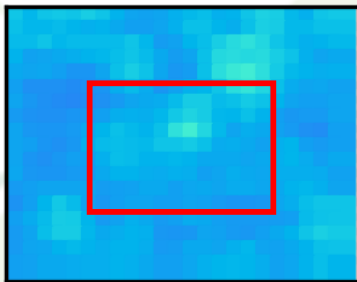
14 band (Blue)



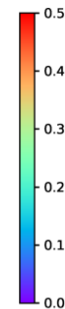
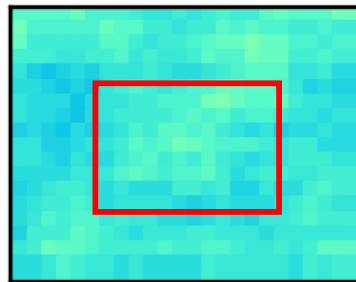
52 band (Green)

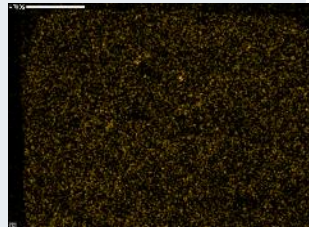


104 band (Red)



190 band (Near Infrared)

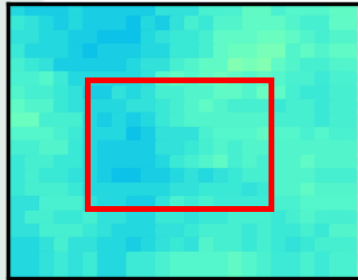


Na	Cl
No data	

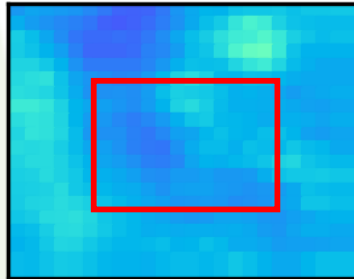
02 HS and Elements

3 cycle : SM (0.1% NaCl)

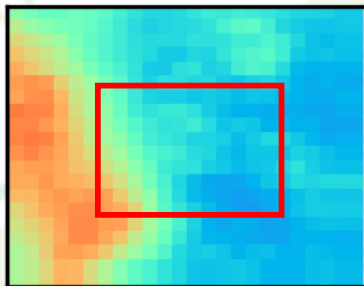
14 band (Blue)



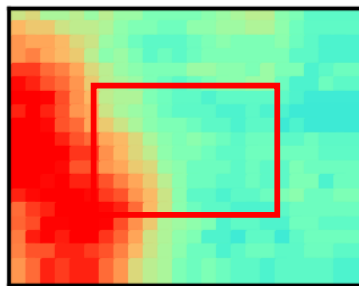
52 band (Green)



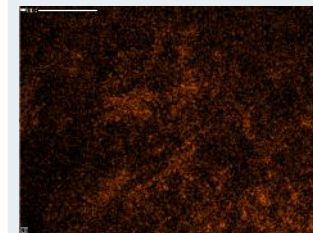
104 band (Red)



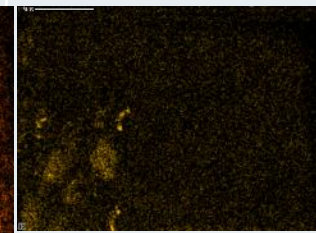
190 band (Near Infrared)



Na



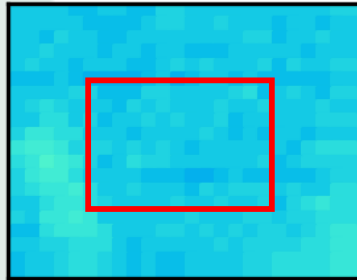
Cl



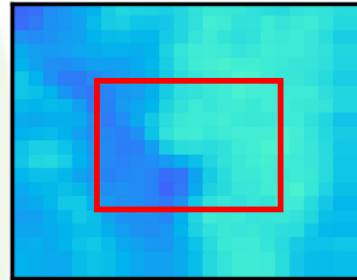
02 HS and Elements

6 cycle : SM (0.1% NaCl)

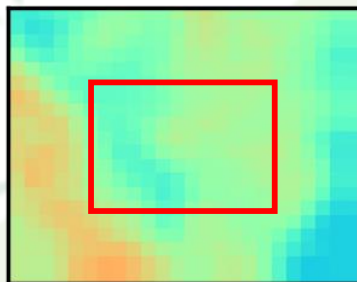
14 band (Blue)



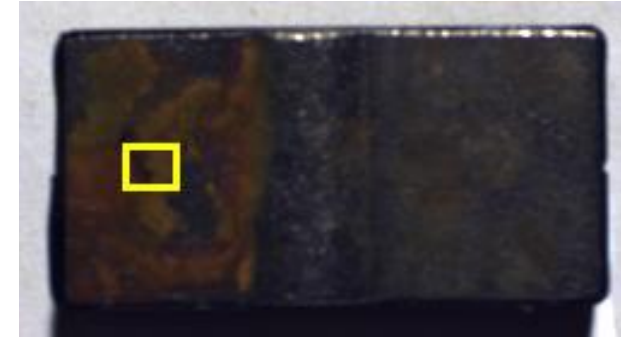
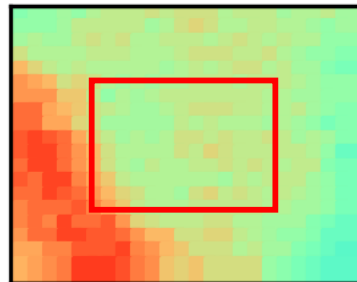
52 band (Green)



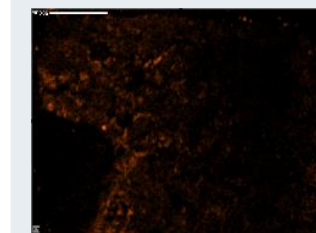
104 band (Red)



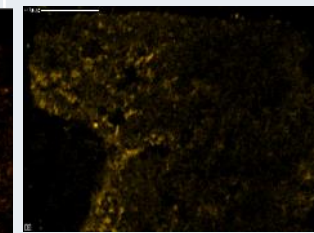
190 band (Near Infrared)



Na



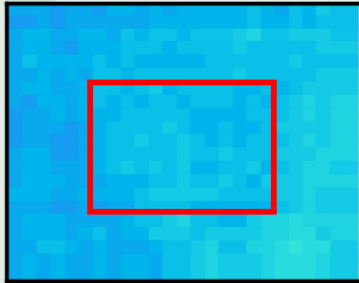
Cl



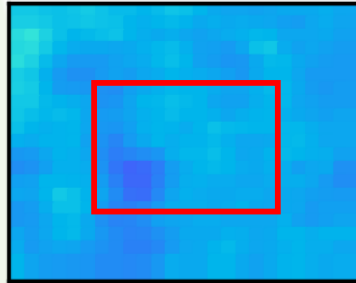
02 HS and Elements

9 cycle : SM (0.1% NaCl)

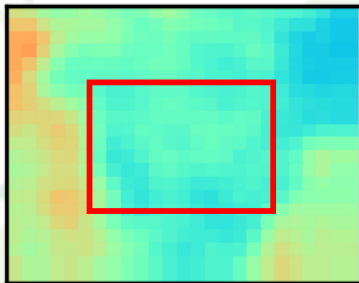
14 band (Blue)



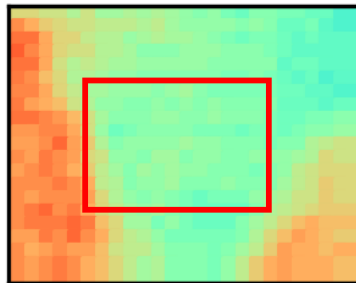
52 band (Green)



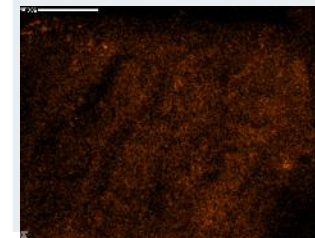
104 band (Red)



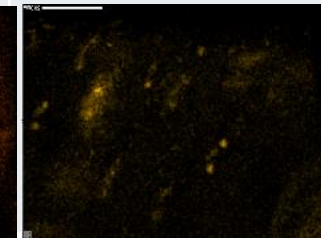
190 band (Near Infrared)



Na



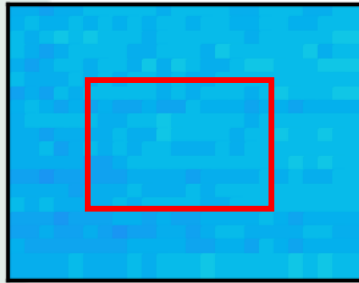
Cl



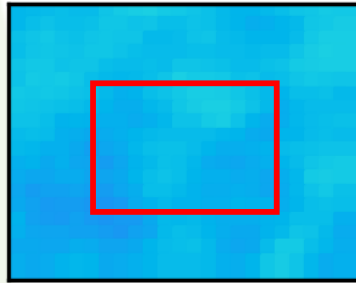
02 HS and Elements

12 cycle : SM (0.1% NaCl)

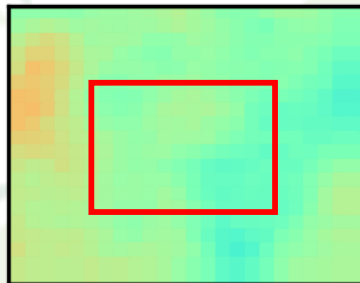
14 band (Blue)



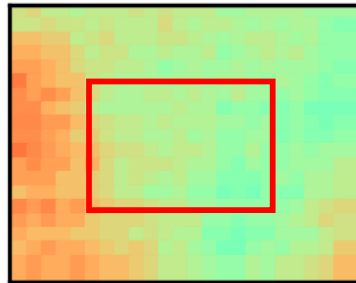
52 band (Green)



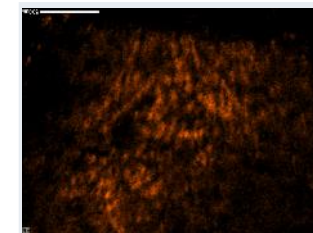
104 band (Red)



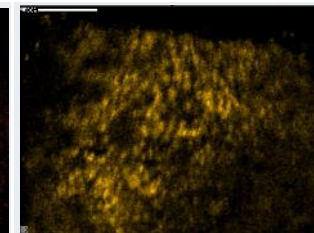
190 band (Near Infrared)



Na



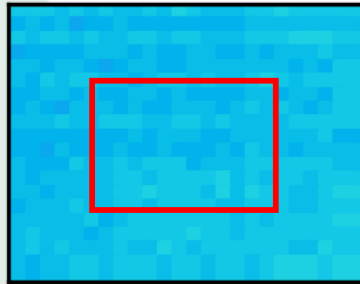
Cl



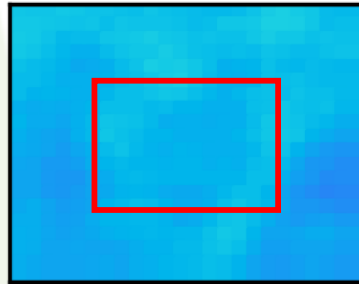
02 HS and Elements

15 cycle : SM (0.1% NaCl)

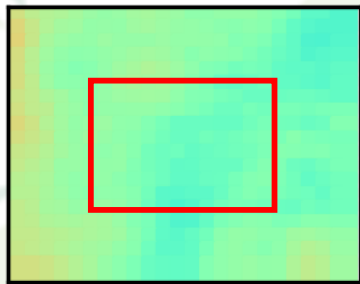
14 band (Blue)



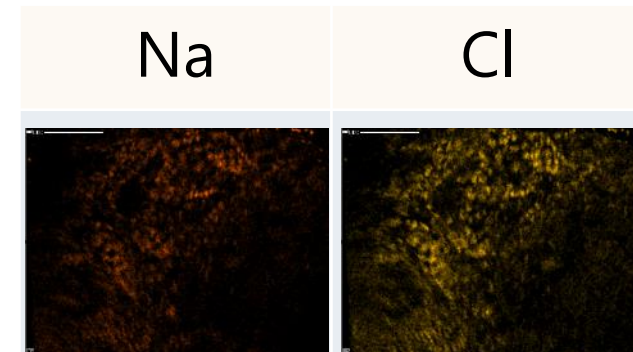
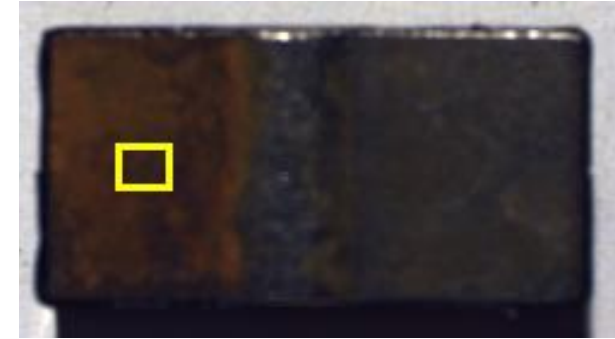
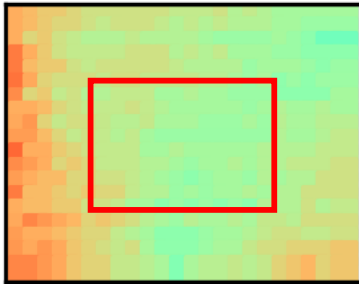
52 band (Green)



104 band (Red)



190 band (Near Infrared)



Conclusion and Future works

1. Hyper Spectrum Camera has the ability for obtaining some additional information from corroded steel surface
2. Halogen light is required to obtain HS of near-infrared
... How to control the light on actual bridges?
3. The hyperspectral images (distributions of reflection intensity) of near-infrared band have been changing with corrosion progress
... What is the main reason for the change?
4. Reflection intensity of near-infrared band may show the corrosion level (progress, stage)



Preventing Corrosion Deterioration

Using high corrosion resistance material e.g. **STAINLESS STEEL***

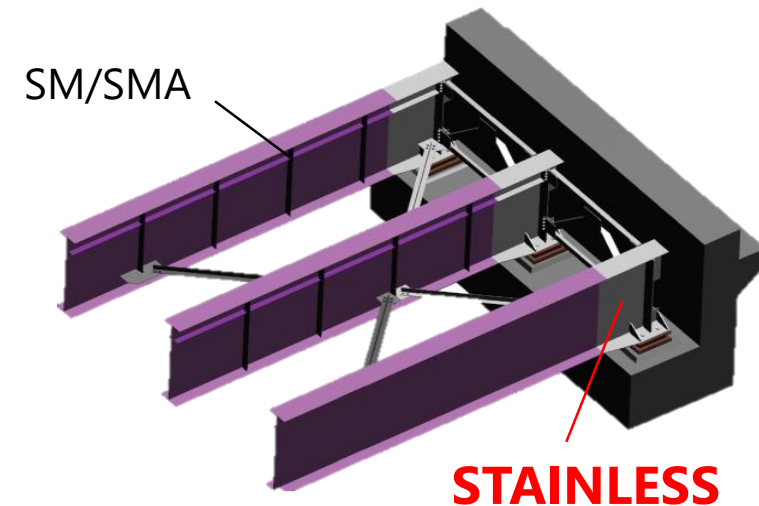
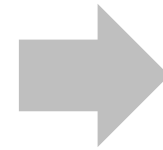
* material cost is about **3 to 4 times** of mild steel/weathering steel

MILD/WEATHERING STEEL(SM/SMA) + STAINLESS STEEL(SUS)

Centre of the girder



End of the girder

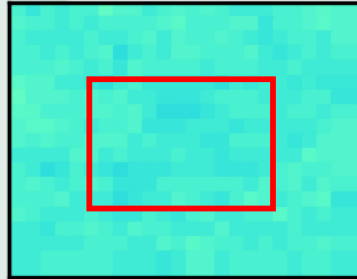




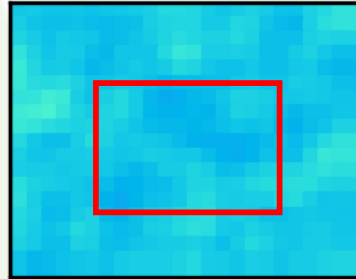
02 HS and Elements

0 cycle : SUS (0.1% NaCl)

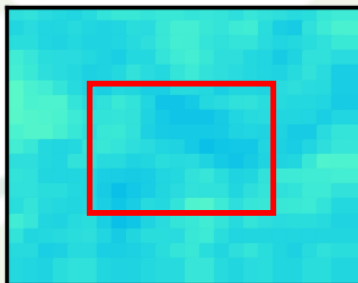
14 band (Blue)



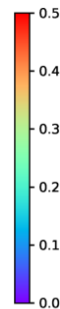
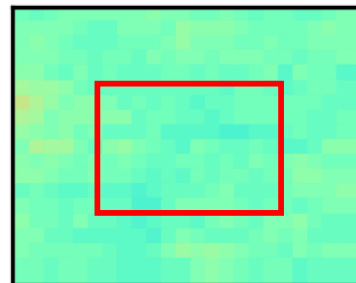
52 band (Green)

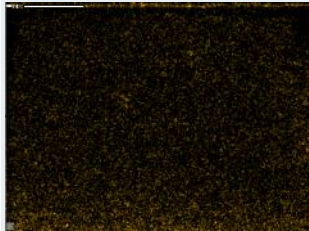


104 band (Red)



190 band (Near Infrared)

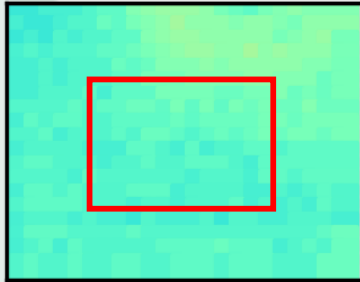


Na	Cl
No data	

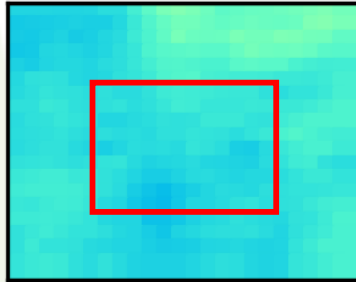
02 HS and Corrosion

3 cycle : SUS (0.1% NaCl)

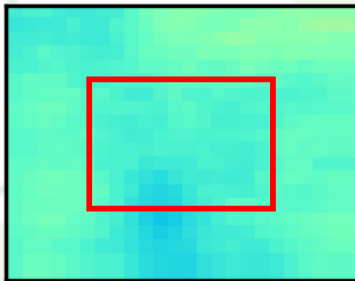
14 band (Blue)



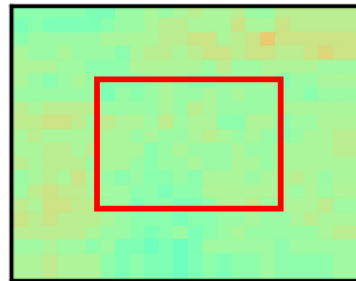
52 band (Green)



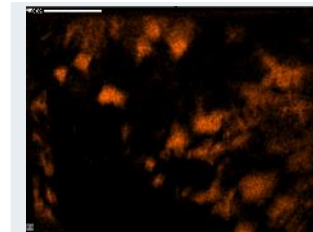
104 band (Red)



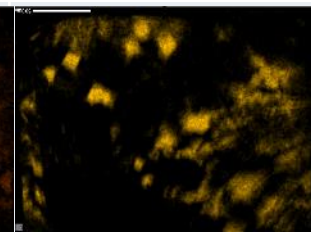
190 band (Near Infrared)



Na

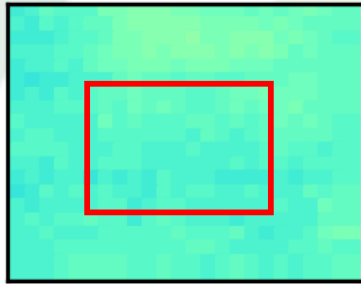


Cl

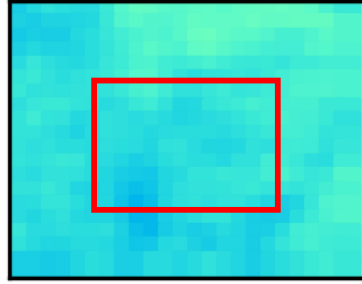


02 HS and Corrosion

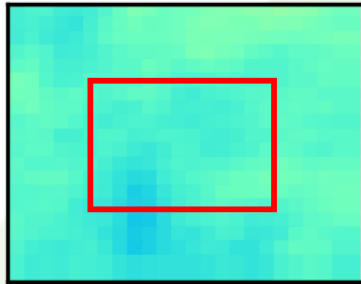
6 cycle : SUS (0.1% NaCl)



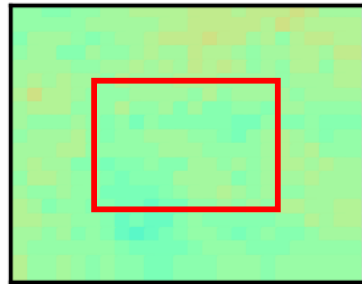
14バンド



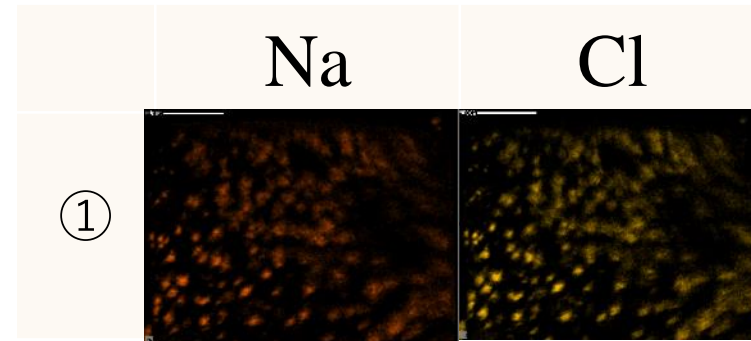
52バンド



104バンド

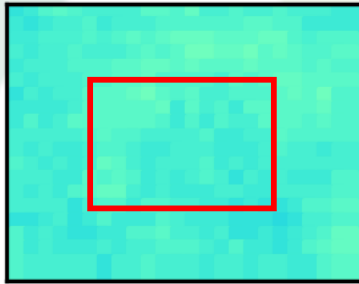


190バンド

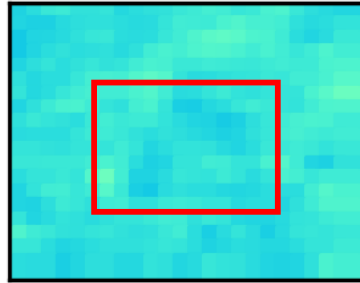


02 HS and Corrosion

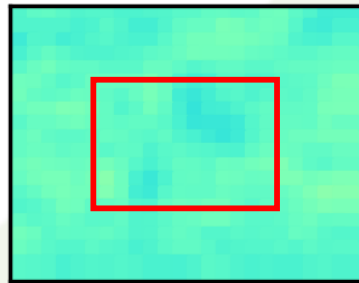
9 cycle : SUS (0.1% NaCl)



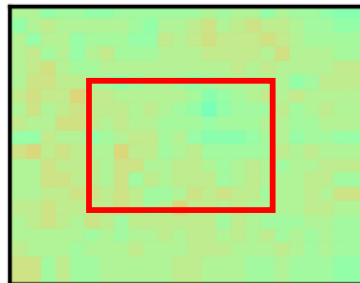
14バンド



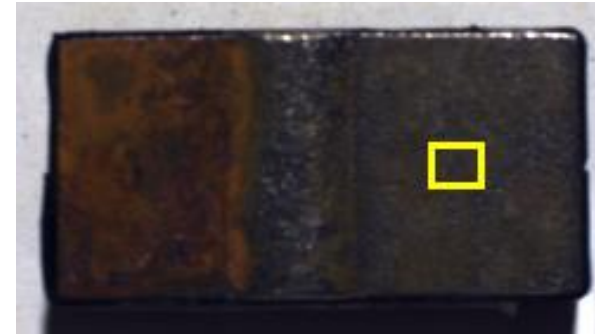
52バンド



104バンド



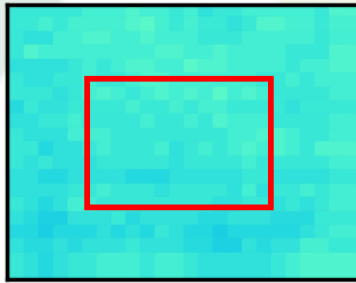
190バンド



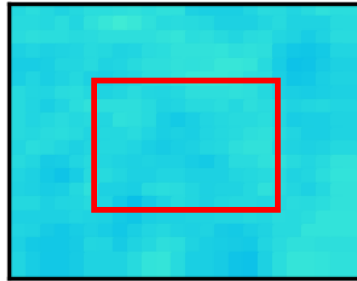
	Na	Cl
①		

02 HS and Corrosion

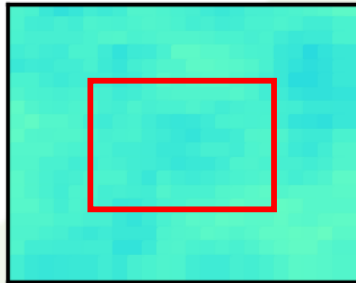
12 cycle : SUS (0.1% NaCl)



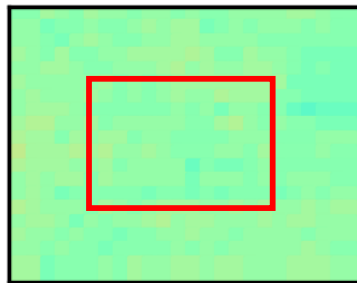
14バンド



52バンド



104バンド



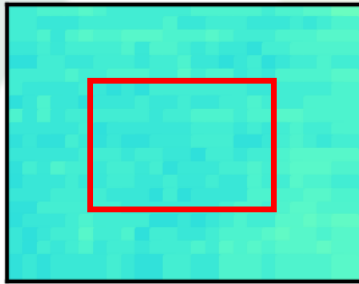
190バンド



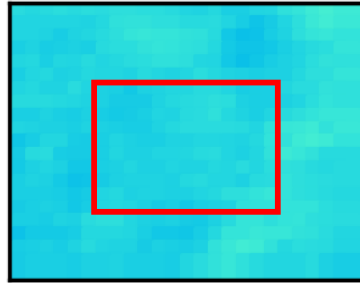
	Na	Cl
①		

02 HS and Corrosion

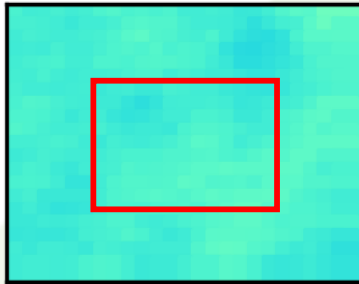
15 cycle : SUS (0.1% NaCl)



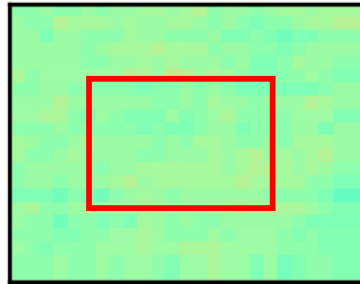
14バンド



52バンド



104バンド



190バンド



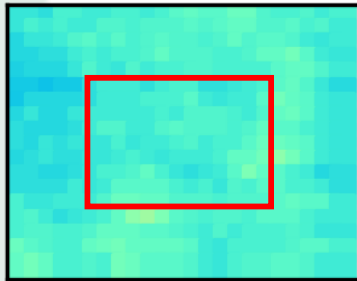
	Na	Cl
①		



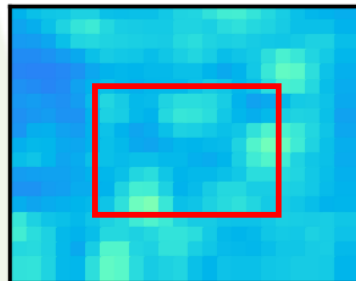
02 HS and Corrosion

0 cycle (0.1% NaCl)

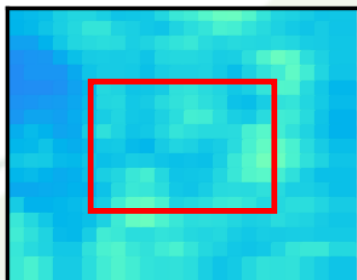
14 band (Blue)



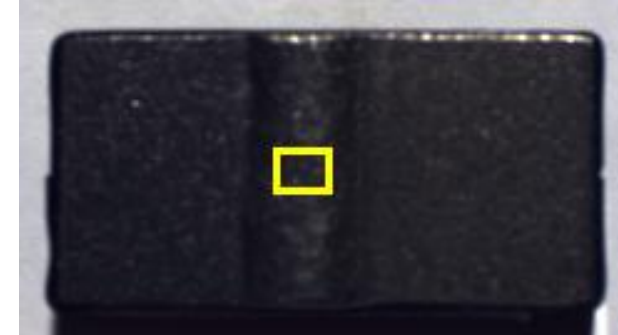
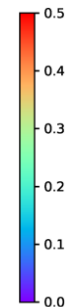
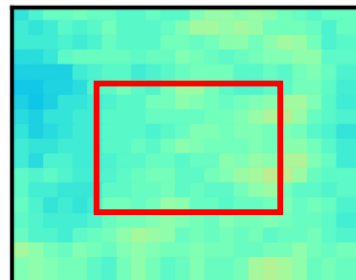
52 band (Green)



104 band (Red)



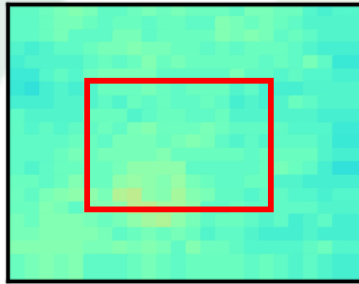
190 band (Near Infrared)



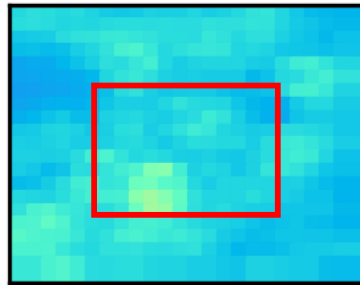
Na	Cl
No data	

02 HS and Corrosion

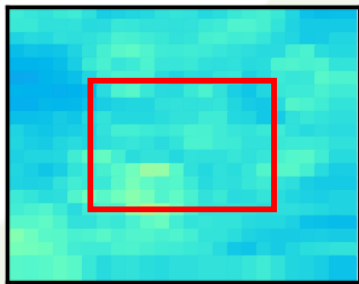
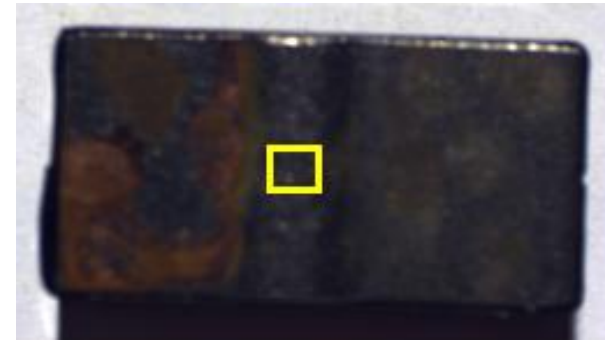
3 cycle (0.1% NaCl)



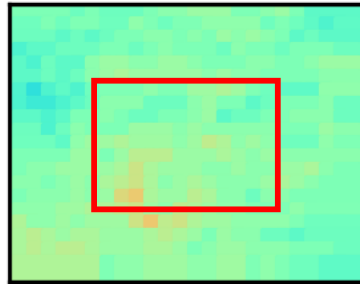
14バンド



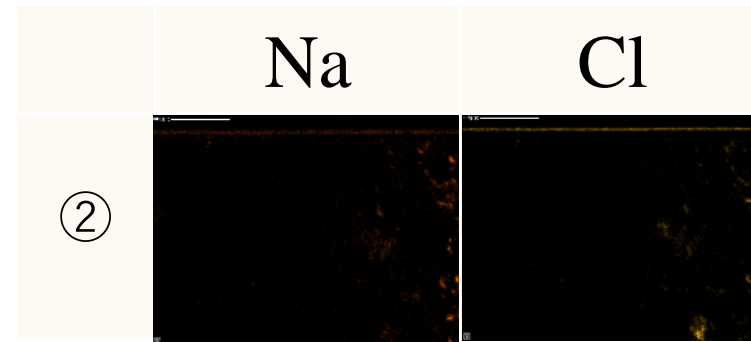
52バンド



104バンド

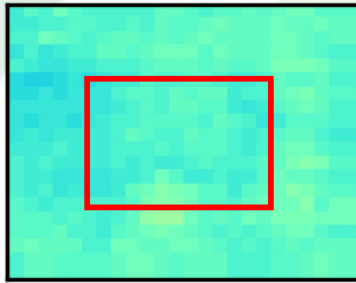


190バンド

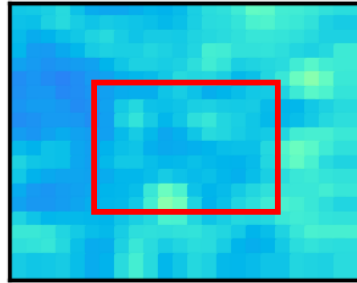


02 HS and Corrosion

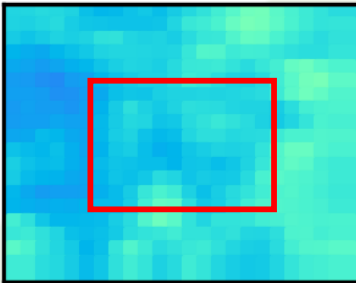
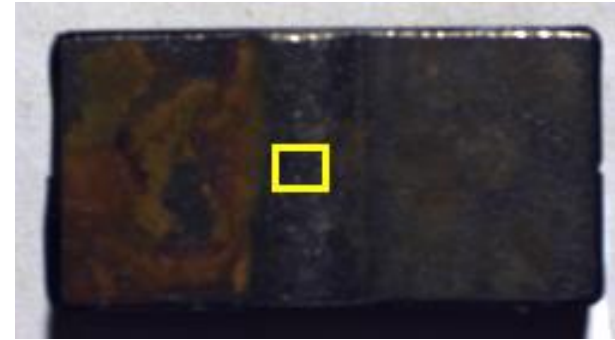
6 cycle (A0.1%_1)



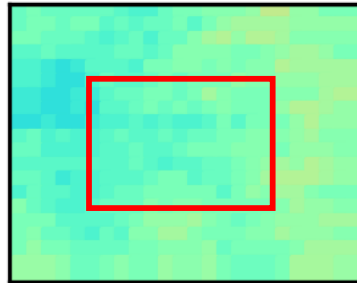
14バンド



52バンド



104バンド

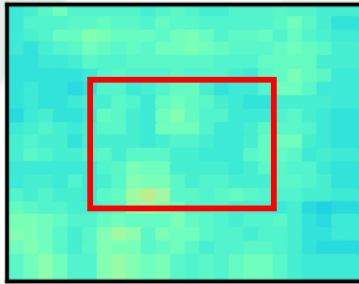


190バンド

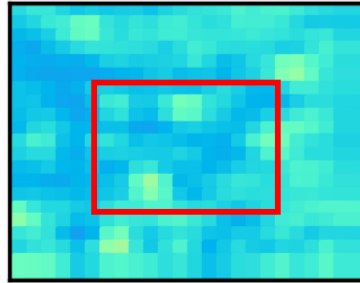
	Na	Cl
②		

02 HS and Corrosion

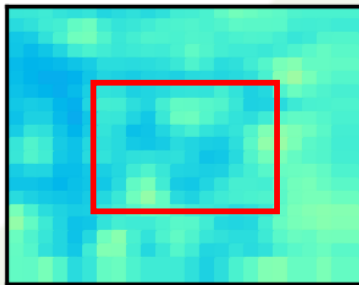
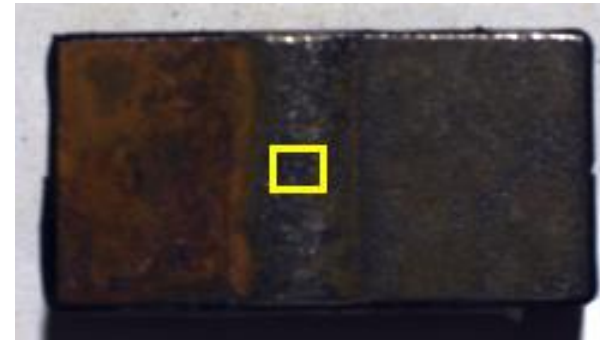
9 cycle (A0.1%_1)



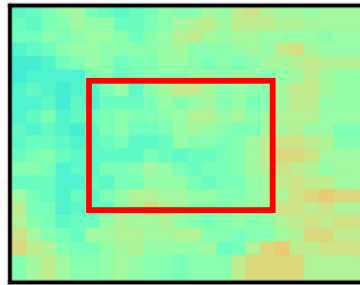
14バンド



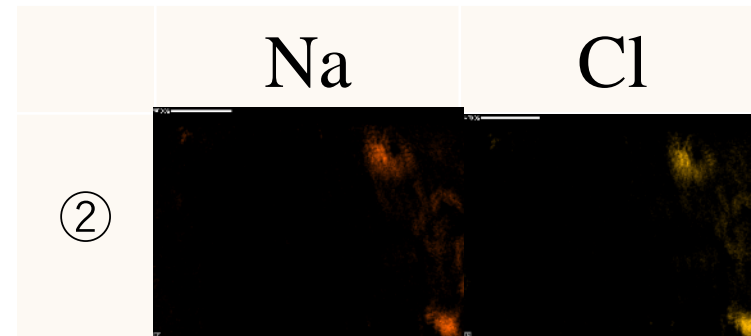
52バンド



104バンド

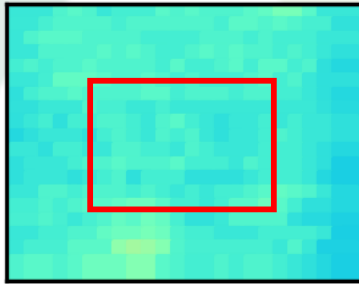


190バンド

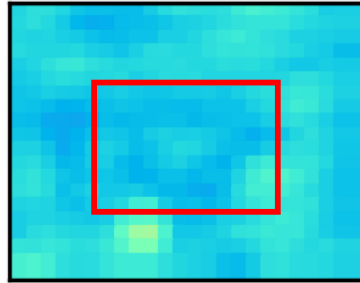


02 HS and Corrosion

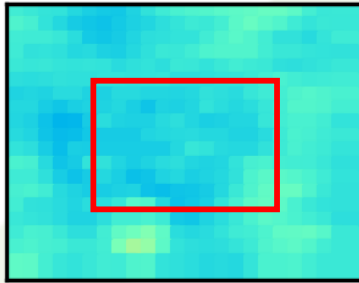
12 cycle (A0.1%_1)



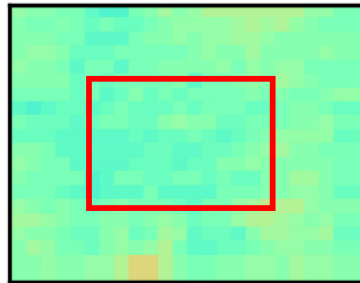
14バンド



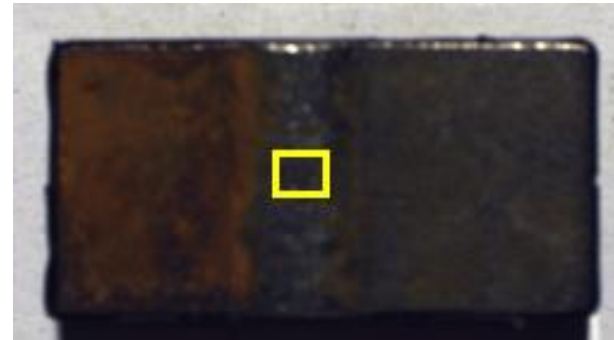
52バンド



104バンド



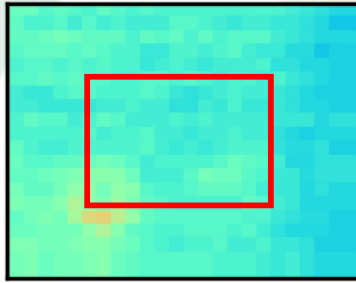
190バンド



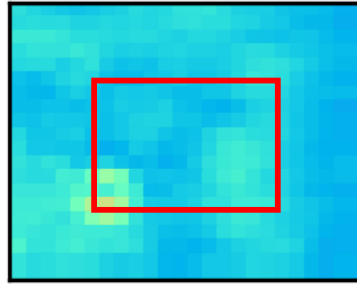
	Na	Cl
②		

02 HS and Corrosion

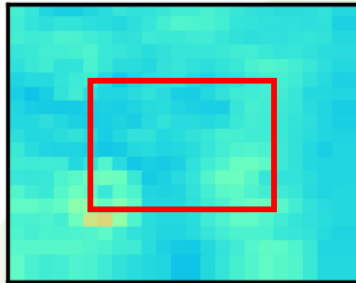
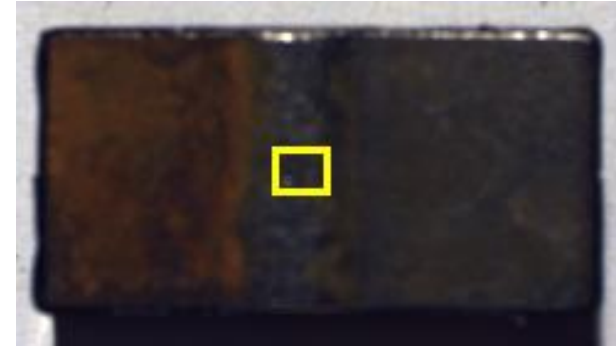
15 cycle (A0.1%_1)



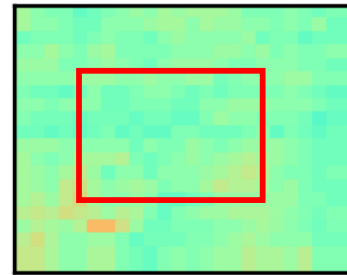
14バンド



52バンド



104バンド



190バンド

